

Firmware Update Procedure by USB

Rev.1.0

Please read before updating firmware

This manual describes the procedure for updating firmware of the monitor by a USB memory stick. For details on the component names of the monitor, the OSD screen operations, and so on, refer to the instruction manual.

■ Precautions

- Target models: PN-M322
- Do not disconnect the main power to the monitor or remove the USB memory stick during firmware update.
- The USB port of the monitor does not support the operation of all USB memory stick available on the market.
- The monitor supports only USB memory stick formatted with FAT16 or FAT32 format. A USB memory stick in NTFS format cannot be used. If update fails, check the format of the USB memory stick. For details on how to format the USB memory stick, refer to the PC Help and so on.
- Depending on the FW version to update, the setting data may be initialized. Before performing the update, please refer to the precautions on the FW update tool or the Update History on the FIRMWARE download page.

■ Symbols

This manual uses the following symbols.

Note

Describes information that must be noted.

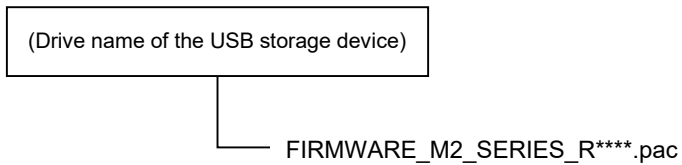
Tip

Provides supplementary explanations and useful information.

Preparations for Firmware Update

1. Copy the firmware image file to the USB memory stick.

Create under the USB memory stick root, and then store the firmware image files to them.



Note

Store only one firmware image file. If multiple files are stored in any of these, firmware update will fail.

Tip

- The following is the name of the firmware image file.

Firmware	File name ^(Note)	Extension
FIRMWARE	FIRMWARE_M2_SERIES_R****.pac	.pac

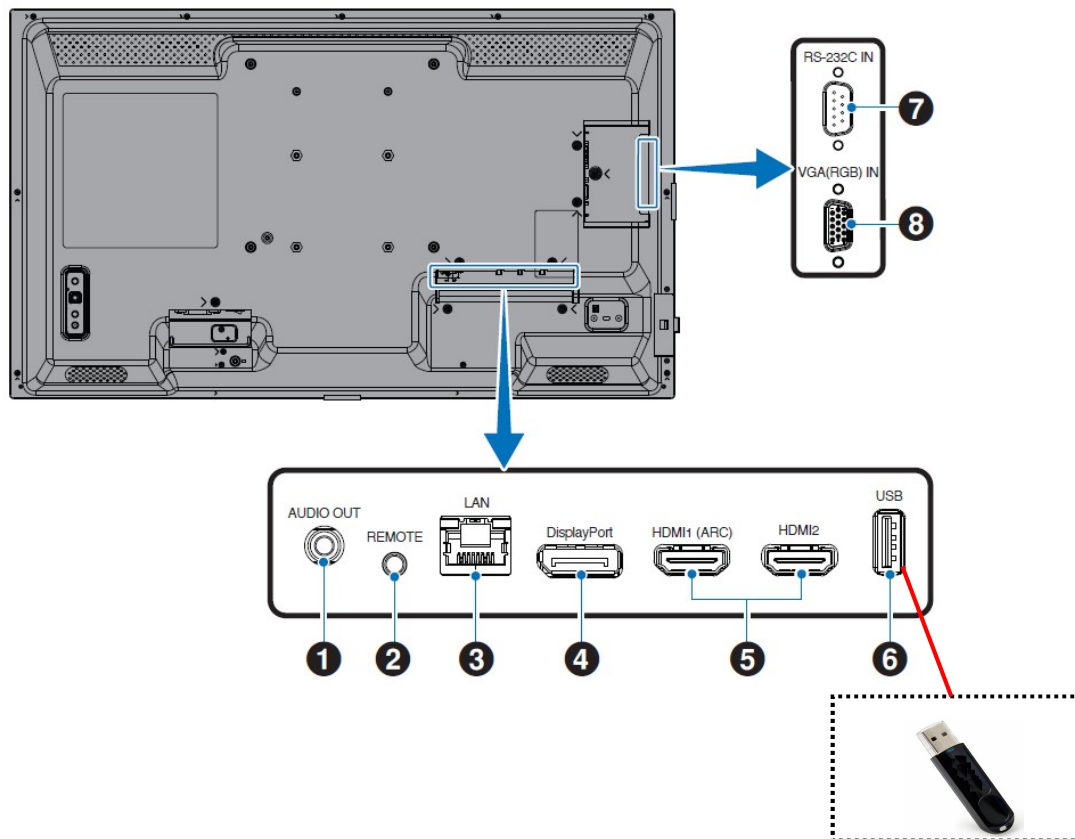
(Note) R****: Revision number

You can't change the file name of the firmware image.

2. Turn off the main power to the monitor.

3. Insert the USB memory stick containing the firmware image files into the monitor.

Insert the USB memory stick into the USB port of the monitor.



This completes the preparation required for firmware update.

Subsequently, go to "Updating Firmware" (→P5).

Updating Firmware

Note

Do not turn off the main power to the monitor or remove the USB memory stick during firmware update.

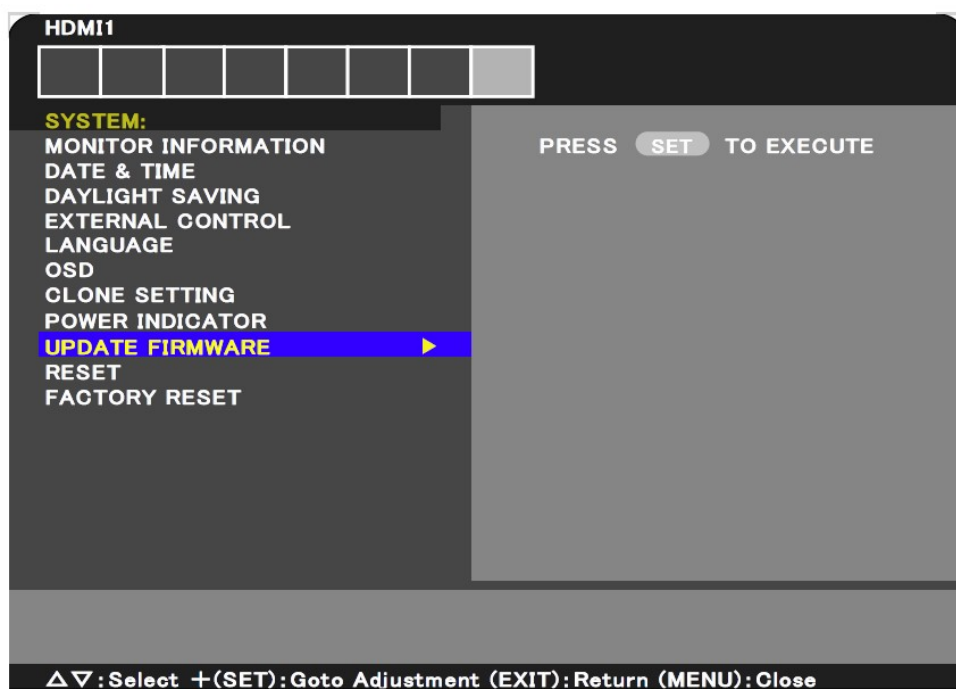
1. Turn on the main power of the monitor.

Please turn on the main power of the device. Additionally, if the device is in standby mode after turning on the main power, please turn it on using the remote control or the buttons on the device.

Before you go to Step 2, please wait for 2 minutes after you turned on the main power.

2. Start update with UPDATE FIRMWARE in OSD menu.

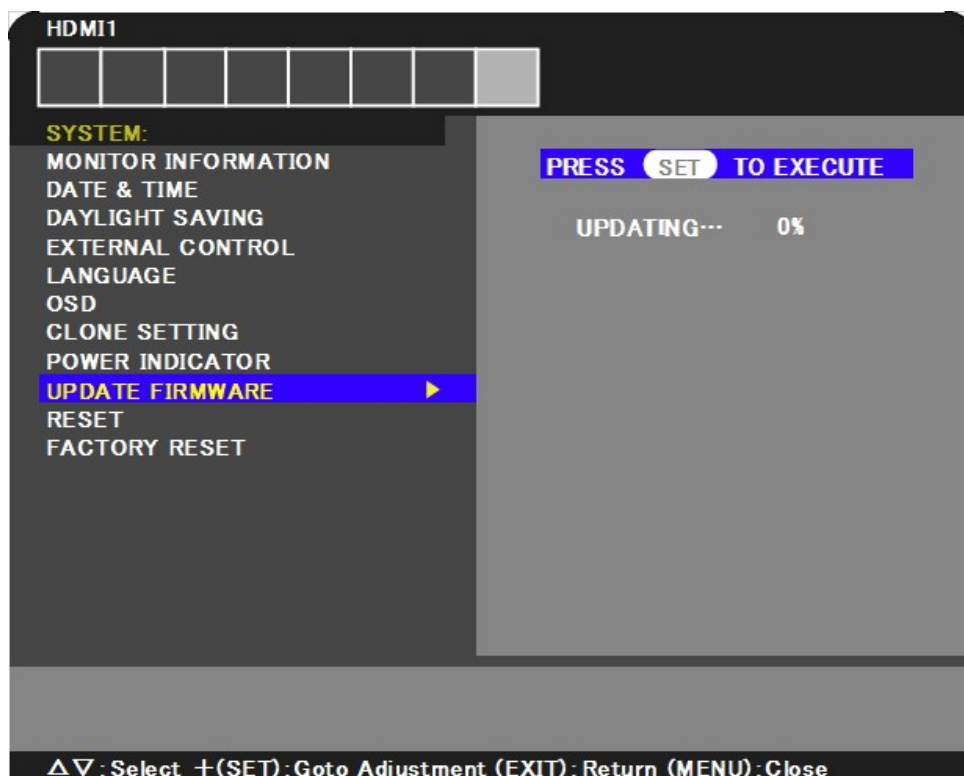
Select UPDATE FIRMWARE in SYSTEM OSD, focus on PRESS SET TO EXECUTE and press SET.



3. Check the starting of the update

Firmware update will start.

During update, LED blinks in green and the progress status will be displayed on OSD.



Once the update is complete, the green LED blinking will stop.

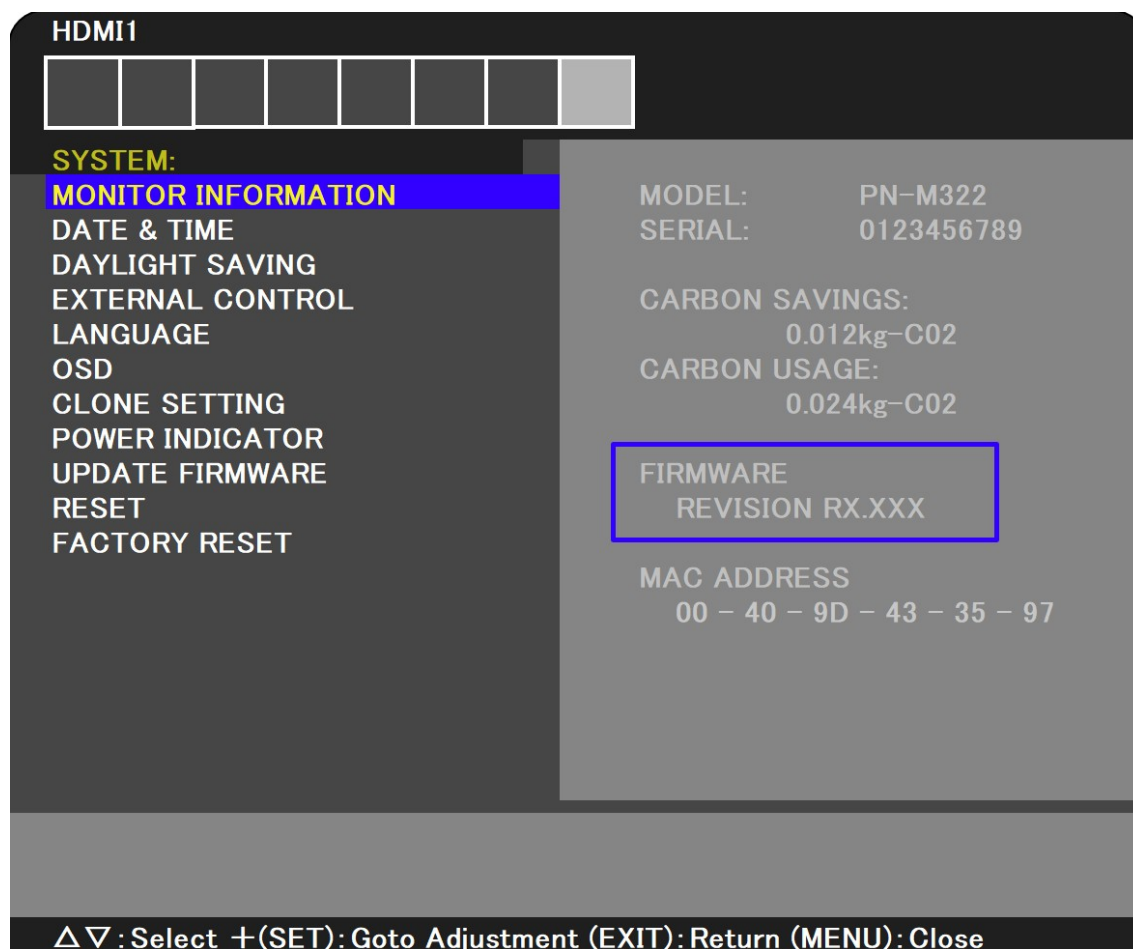
4. Check the result of update

After update has finished, LED and OSD changes to either of the following conditions.

●Update Succeeded

Update has succeeded if it matches the following conditions:

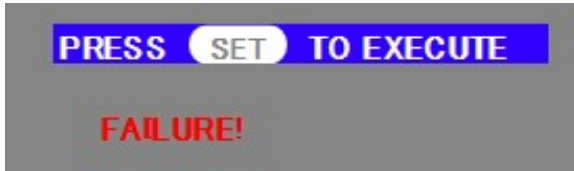
- The monitor restarts with the blue LED blinking
- The REVISION in SYSTEM>MONITOR INFORMATION>FIRMWARE” (blue frame in the image below) has changed to the REVISION of the updated file.



●Update Failed

Update has failed if it matches either of the following conditions:

- LED blinking in red
- "FAILURE! " message displayed on OSD



If you failed to update, turn off the main power and please try again from "Update Firmware" procedure (→P5).

Please also refer to "When failed to update firmware"(→P9).

If Firmware Update Fails

When you have failed to update firmware, please check the following points.

■ **Device does not operate with power on**

If you turn off the main power under update failed condition, this device may not operate properly.

However, update function with USB storage device may be available, so please follow the procedure in this document and try to update again.

■ **Firmware update does not start**

If this device does not operate properly, firmware update may not start.

If firmware update does not start, please contact your dealer.